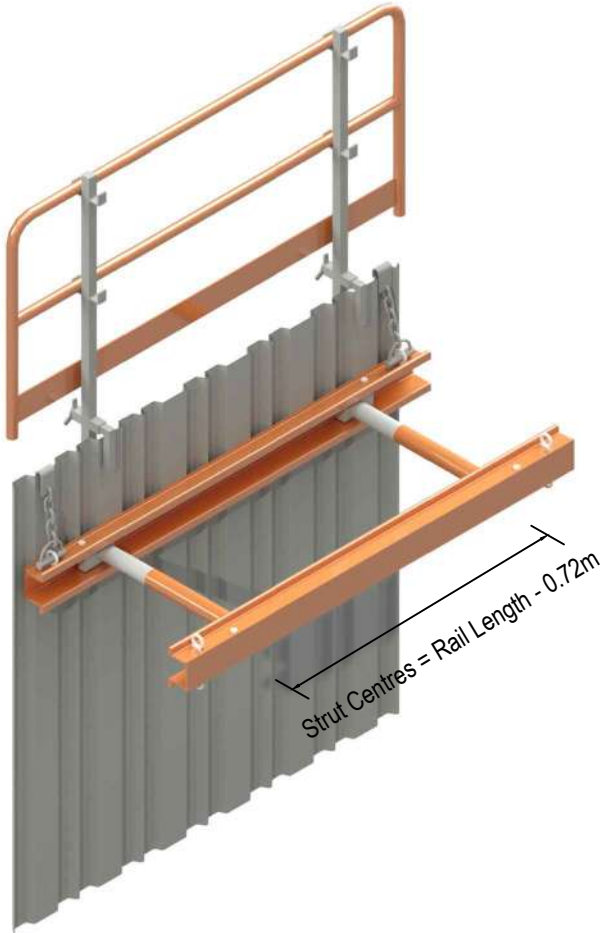


Aluminium Waler Information Sheet

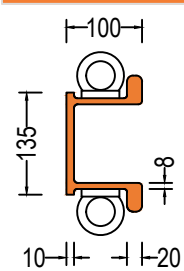
Waler Frame System



Length	Permissible Load	Cylinder	Min Width	Max Width	Frame Weight
m	kN/m		m	m	
1.50	80	2no	0.50	2.00	77
2.00	56	2no	0.50	2.00	88
2.50	48	2no	0.50	2.00	99
3.00	30	2no	0.50	1.80	110
3.50	36	3no	0.50	1.80	143
4.00	30.5	3no	0.50	1.80	154
5.00	23	3no	0.50	1.80	168

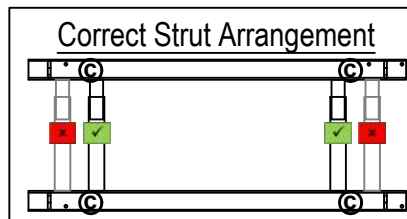
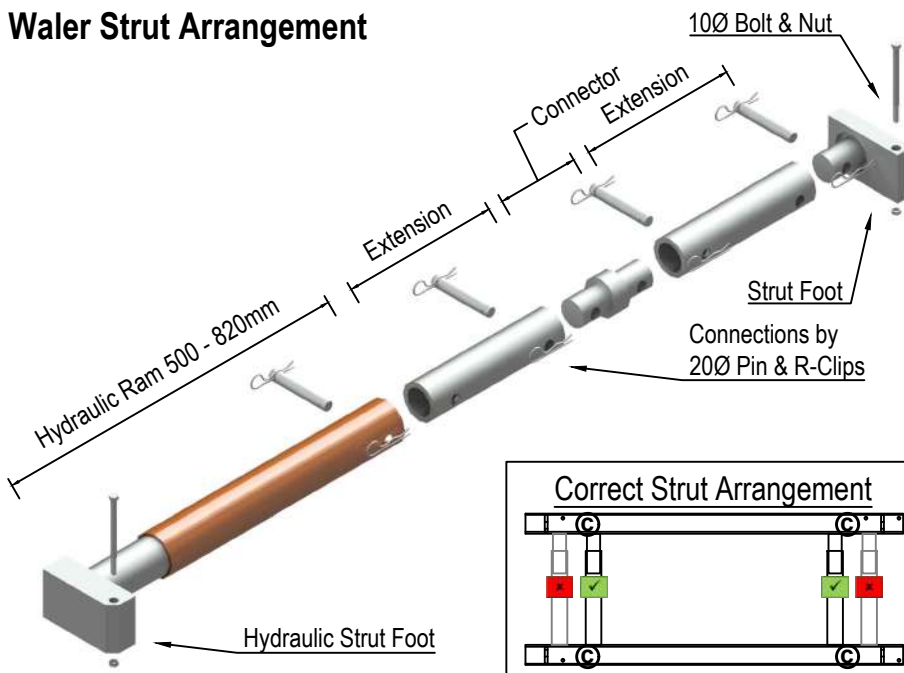
Please note that 3 Cylinders are required on rails 3.5m and above.

Frame weights assume max length strut @ 22kg each



Permissible Moment	Moment of Inertia	Section Modulus	Weight
kNm	cm ⁴	cm ³	kg/m
18	561	117	11

Waler Strut Arrangement



Item	Weight
	kg
1.5m Rail	16.5
2.0m Rail	22.0
2.5m Rail	27.5
3.0m Rail	33.0
3.5m Rail	38.5
4.0m Rail	44.0
5.0m Rail	55.0
Hydraulic Ram 500-820mm	11.0
Strut Foot	3.1
0.10m Extension	1.0
0.20m Extension	1.8
0.30m Extension	2.5
0.50m Extension	3.1
1.0m Extension	6.2