

SAFETY LADDER ACCESS SYSTEMS

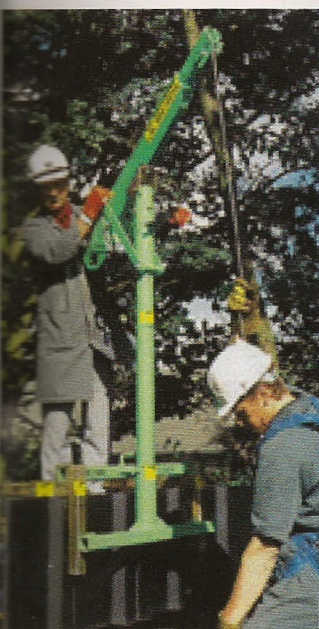
ALL EQUIPMENT IS AVAILABLE FOR PURCHASE

DEEP EXCAVATION LADDER ACCESS SYSTEM



- Entry platform complete with side protection and safety gate.
- Platform Section: 2.3mtr high x 1.2mtr long x 0.6mtr wide.
- Additional ladder sections available: 1.0mtr and 2.0mtr long complete with bracing struts.
- Fully tested and certified.
- We recommend the use of Davit Arm Winch System complete with secondary fall arrest line when entering deep excavations.
- Trench Box Ladder Access System also available.

DAVIT ARM SAFETY SYSTEM



- Our Davit Arm trench system is ideal for safely lowering one person into any manhole, open excavation, cofferdam, pit or caisson.
- We have various methods available for securing the Davit System.
- Very easy to assemble modular section.
- Attaches to trench sheets.
- Davit Arm comes complete with 12mtr man-riding single speed winch with 200kg maximum load capacity.
- Supplied with secondary fall arrest block.
- Full range of safety products available, including full body rescue harnesses, gas detection, rescue equipment and lifeline.
- For any further technical information please contact the relevant depot.