



SITE EQUIPMENT LIMITED

Edition 26

**CIVIL ENGINEERING,
GROUNDWORK AND
TRENCHLESS EQUIPMENT
FOR HIRE AND SALE.
TEMPORARY WORKS DESIGN.**



siteequipment.co.uk



CONTENTS

DELIVERY & SERVICE DETAILS	3
PIPE CADDY	4
MANUAL PIPE PULLER & CADDY	4
PIPEBURSTING EQUIPMENT	5
GRUNDOWINCH - 3T/4T/5T/10T	6
GRUNDOMAT IMPACT MOLE	6
CULVERT PULLERS	7
LITE BOX SUPPORT SYSTEMS	8
LITE DRAG BOX	9
LITE SPINDLES	9
STANDARD TRENCH BOX	10
STANDARD MANHOLE BOX	10
SUPER DRAG BOXES	11
HI-CLEARANCE BOX	11
STANDARD SPINDLES	12
EDGE PROTECTION & ACCESS SYSTEMS	13
DAVIT SYSTEM	13
ULTRA LITE UTILITY BOX	14
FRAMI FORMWORK PANEL SYSTEM, DOKAFLEX	15
TRENCH SHEETS & ACCESSORIES	16
MANHOLE BRACE SYSTEMS	17
H SERIES BRACE FRAMES	18
WALER FRAME SYSTEMS	19
MANHOLE SHUTTERS	20
TRENCH STRUTS & PROPS	21
FRAMI XLIFE FORMWORK SYSTEM & DOKAFLEX 124	22
SLIMSHORE SOLDIER SYSTEM	23
FORMWORK ACCESSORIES	24
SEL LITE FORMWORK SOLDIERS, CONCRETE SKIPS & GROUND PROTECTION	25
STEEL & ANTI-SKID ROADPLATES	26
TEMPORARY WORKS DESIGN	27

NEW PRODUCTS

Ultra-Light Utility Box

Page 14



Frami / DokaFlex Formwork Systems

Page 15

GET IN TOUCH

REGIONAL AREAS

BRISTOL & SOUTH WEST (HQ)
BS11 9HS
0117 982 8236

LONDON & HOME COUNTIES
UB7 7EG
020 7127 8002

CARDIFF & NORTH WALES
CF37 5TG
01443 844713



siteequipment.co.uk
enquiries@siteequipment.co.uk

DELIVERY & SERVICE DETAILS

NATIONAL DEPOTS, LONG OPENING HOURS & BESPOKE SERVICES

We ensure you can access the equipment you need at times that are convenient for you, in all areas of the country.

Our depots are open for longer and our transport fleet will deliver further than other suppliers. Our dedicated manufacturing facility allows us to offer bespoke solutions. In addition to all equipment hires, we can also provide complimentary engineering support.

Our knowledgeable and motivated team are committed to delivering solutions which match the highest levels of customer specifications. All of our excavation support packages are offered with health and safety placed at the forefront of what we do. We have supplied equipment and training to many of the UK's leading construction projects.

Call us now on **0117 982 8236** or email **enquiries@siteequipment.co.uk** to get in touch with a member of our dedicated support team to discuss what we can do for you.



FOR MORE INFORMATION ABOUT OUR PRODUCTS PLEASE VISIT US AT **SITEEQUIPMENT.CO.UK**

PIPE CADDY

PIPE CADDIES

SEL's Pipe Caddy is the safer way to lay pipes, ensuring that your groundworkers avoid injury and minimise damage to any pipes while they are being installed.

PIPE CADDY

- 300mm to 1200mm pipe diameter.
- Tested to 3,700 kg (SWL).
- Pipe lifter weight approx. 600kg.

PIPE CADDY PLUS

- 1200mm to 2400mm pipe diameter.
- Tested to 10,000kg (SWL).
- Pipe lifter weight approx. 1200kg.



MANUAL PIPE PULLER & CADDY

RZA EXTERNAL PIPE PULLER

- To operate the pulling home arms, move the handles to position 2 with the chains alongside the pipe. Secure the chains to the pipe pulling beam then switch position levers and pump again with the pulling force of 1.5 tonnes.
- Move handles to position 2 for the operation of your pulling home arms and chains alongside the pipe you're about the pull home. Secure the chains to the pipe pulling beam then switch position levers and pump again with the pulling force of 1.5 tonnes.
- Finally, simply reverse this procedure and move to the next pipe.



Model	Pulling Force	Weight
RZA600 - 1250	1.5 tonne	317kg
RZA350 - 750	1.5 tonne	177kg

INFLATABLE PIPE STOPPERS AVAILABLE PLEASE CONTACT US FOR DETAILS.

PIPEBURSTING EQUIPMENT

GRUNDOBURST 400G / 800G PIPE BURSTER

By having the unique ladder rod safety system on the 400G / 800G, you know that safety is the first priority. The Grundoburst is equipped with 40T / 80T on pull back which provides complete control of the burst.

There are only six main pieces of equipment used on a pipe burster: the rod, the expander, towing head, rig (power pack), bursting unit and delta blade (rollerblade). All are sent on a trailer, providing scope to install up to 200m per day

All bursting rigs are supplied with 100M of rods, extra rods for both 400G and 800G are available.

We also have available a 35mm rod system for 50mm pipes.

We offer a full site assessment for all our pipebursting equipment, giving our customers help and advice.



QUICKLINK LADDER ROD SYSTEM

QuickLock bursting rods quickly and easily link together.

This greatly reduces the amount of time needed to load the rods compared to a standard screw-together stem system.

Safest rod system available.



PB30 PIPE BURSTER CABLE SYSTEM

Small and compact, the wire feed Pipe Burster is ideal for the jobs that only a small machine can access. It is capable of bursting and replacing all the common pipe materials - Pitch Fibre, cast-iron, PE and PVC.

The PB30 can easily fit in a van for fast storage, and all hydraulic fluids are biodegradable.

- Pulling force of 30T
- 50m pipe length
- 50 - 60mm diameter pipes
- Small 1m² footprint



WE CAN ARRANGE ON SITE DEMONSTRATIONS FOR ALL THESE PRODUCTS IF REQUIRED.

GRUNDOWINCH - 3T/4T/5T/10T

GRUNDOWINCH KW3000, KW4000, KW5000, KW10000

The Grundowinch is an easy and safe way of carrying out cable pulling, slip-lining and Pipe Bursting.

It enables you to control the speed of the line and tonnage while making sure stretching of the pipe or cable does not occur. Compact and towable from site to site, it comes complete with a 2-metre draft arm suitable for deeper pits.

Our Grundowinch can help with pipe insertion or slip-lining through your damaged pipelines, enabling a quick solution that avoids costly trench work.

- Fully controllable line speed
- 100kN (10T) maximum pulling force
- 15kW 3-cylinder diesel engine
- Built in-line meter counter
- 3T/4T/5T/10T models available



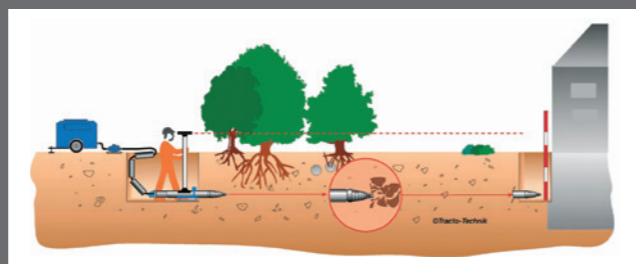
GRUNDOMAT IMPACT MOLE



When open cutting a trench is not possible, the Impact Mole is the simplest way of getting a pipe or cable through suitable ground with minimal disturbance.

Two small pits, one entry and one exit, are all that is required. The minimum pit size is just 1.5 x 0.70m, which reduces damage to the work area.

- Model types P/Z: 45-180mm diameter
- Up to 20m length
- Bull nose reverse towing compatible
- A wide range of towing heads available
- Forward and reverse gear
- Minimum compressor output 125CFM
- Tried and tested method to avoid ground disruption



CULVERT PULLERS

RZE16 CULVERT PULLER

The RZE16 pipe and culvert puller offers a safe and fast method for joining concrete segments. The system is fully automatic with 8 hours of battery and is operated via a cable remote. A spare battery and charger are supplied.

- Suitable for 0.80 – 3.00m high pipes / culverts (Max. 5m width)
- No trailing power cables
- Hydraulic cylinder tensioning with adjustable pressure
- Tensioning within the pipe at any point
- Easy movement on 4 wheels within the pipe
- Large clamping surfaces prevent damage to the inside wall of the pipe
- The hydraulics allow for easy release

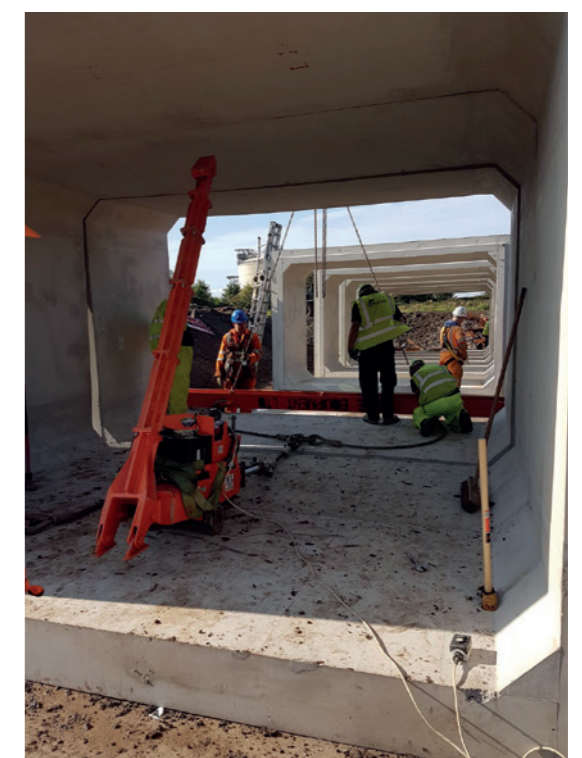


MITY MITE 30T CULVERT PIPE PULLER

The Mity Mite hydraulic pipe puller is laser compatible, safe and simple to use. It is capable of pulling pipes up to 30T and 3m in diameter.

Our remote-controlled puller operates from outside the pipe for maximum safety.

- Model type 5516.
- Capacity 30T.
- Weight 255kg.
- Recommended 25mm wire rope pulling sling.
- Batteries 12 Volt DC group 27.
- 12 Volt M3218L (motorcycle).
- Oil reservoir capacity 32 litres.



WE CAN ARRANGE ON SITE DEMONSTRATIONS FOR ALL THESE PRODUCTS IF REQUIRED.

LITE BOX SUPPORT SYSTEMS

Lite Trench Box Summary

Plate length L [m]	Plate height H [m]	Pipe clearance length LC [m]	Permissible Earth Pressure [kN/m ²]
2.00	2.00 base 1.00 top	1.60	34.1
2.50	2.00 base 1.00 top	2.10	30.0
3.00	2.00 base 1.00 top	2.60	25.0
3.50	2.00 base 1.00 top	3.10	18.9
4.00	2.00 base 1.00 top	3.60	23.0

All 2.0m high base boxes have a vertical pipe clearance height (Hc) of 940mm

Lite Trench Box Weights

Box Length [m]	Panel Height [m]	Weight per box [kg] Please refer to the Lite Spindle chart (Page 9)					
		Type A	Type B	Type C	Type D	Type E	Type F
2.00	2.00 Base	743	754	770	780	789	803
	1.00 Top	406	412	420	425	430	437
2.50	2.00 Base	861	872	888	898	907	921
	1.00 Top	462	468	476	481	486	493
3.00	2.00 Base	983	994	1010	1020	1029	1043
	1.00 Top	518	524	532	537	542	549
3.50	2.00 Base	1329	1340	1356	1366	1375	1389
	1.00 Top	582	588	596	601	606	613
4.00	2.00 Base	1577	1588	1604	1614	1623	1637
	1.00 Top	844	850	858	863	868	875

Lite Manhole Box Summary

Plate length L [m]	Plate height H [m]	Pipe clearance length LC [m]	Permissible Earth Pressure [kN/m ²]
2.00	2.00 base 1.00 top	1.60	34.1
2.50	2.00 base 1.00 top	2.10	30.0
3.00	2.00 base 1.00 top	2.60	25.0
3.50	2.00 base 1.00 top	3.10	18.9
4.00	2.00 base 1.00 top	3.60	23.0

All 2.0m high base boxes have a vertical pipe clearance height (Hc) of 940mm

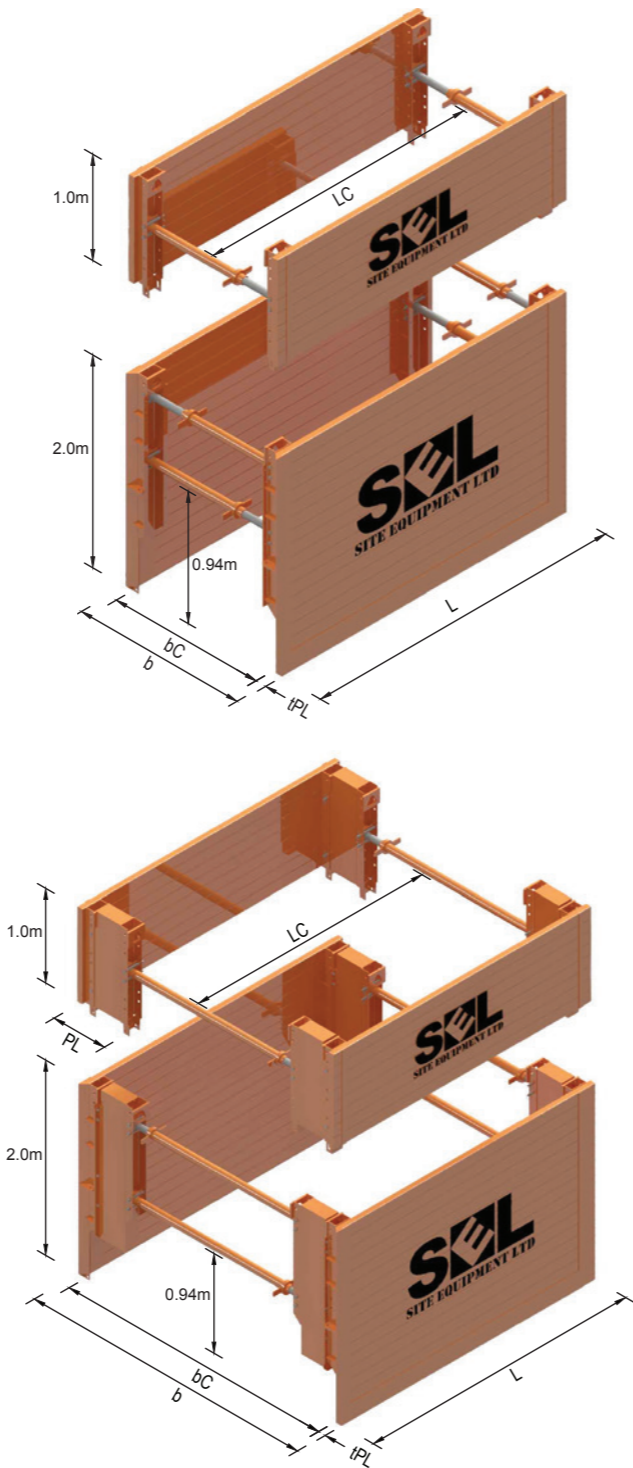
Lite Manhole Box Weights

Box Length [m]	Panel Height [m]	Weight per box [kg] Please refer to the Lite Spindle chart (Page 9)					
		Type A	Type B	Type C	Type D	Type E	Type F
2.00	2.00 Base	1063	1074	1090	1100	1109	1123
	1.00 Top	634	640	648	653	658	665
2.50	2.00 Base	1181	1192	1208	1218	1227	1241
	1.00 Top	690	696	704	709	714	721
3.00	2.00 Base	1303	1314	1330	1340	1349	1363
	1.00 Top	746	752	760	765	770	777
3.50	2.00 Base	1649	1660	1676	1686	1695	1709
	1.00 Top	810	816	824	829	834	841
4.00	2.00 Base	1897	1908	1924	1934	1943	1957
	1.00 Top	1038	1078	1086	1091	1096	1103

The letter indicates the recommended spindle size where a square excavation is required.

Our Lite Box Support range is lightweight by design whilst still providing a robust support system. Designed to be dropped directly into a pre-excavated trench in reasonably stable ground, these boxes are ideal for many situations.

Recommended maximum depth – 3.90m.



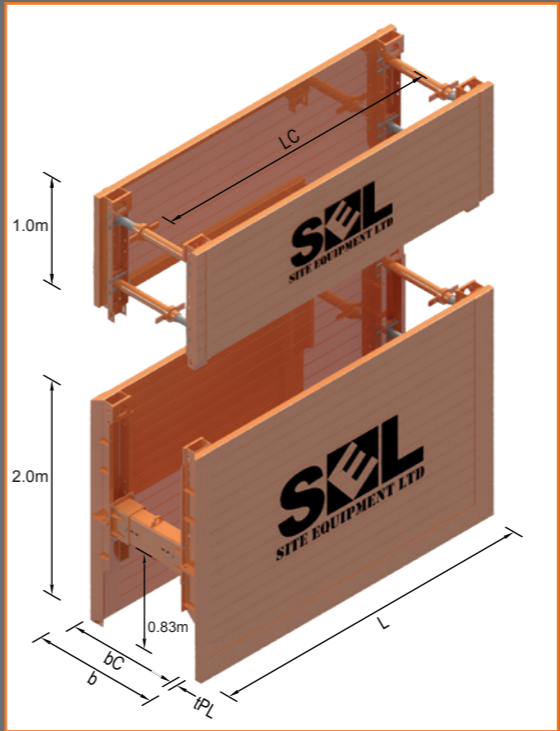
A FORKLIFT/MACHINE MUST BE PROVIDED TO OFFLOAD THE KIT FROM THE DELIVERY VEHICLE. ALTERNATIVELY WE CAN DELIVER THE EQUIPMENT ON A HIAB VEHICLE BY PRIOR ARRANGEMENT

LITE DRAG BOX

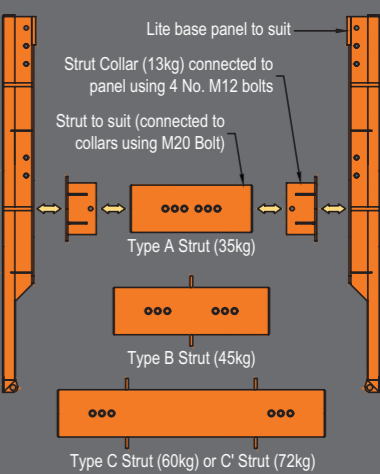
Ideal for good ground. Simply pull through the trench from the heavy duty front strut, or the two front eyelets for the chain sling to connect and drag.

Lite Drag Box Summary

Plate length L [m]	Plate height H [m]	Pipe clearance length LC [m]	Permissible Earth Pressure [kN/m ²]	Weight per box [kg] Please refer to the spindle chart below.		
				Type A	Type B	Type C'
2.00	2.00 base 1.00 top	1.50	34.1	776 406	792 412	827 420
2.50	2.00 base 1.00 top	2.00	30.0	894 462	910 468	945 476
3.00	2.00 base 1.00 top	2.50	25.0	1016 518	1032 524	1077 532
3.50	2.00 base 1.00 top	3.00	18.9	1362 582	1378 588	1413 596
4.00	2.00 base 1.00 top	3.50	23.0	1610 844	1626 850	1661 858



Front Strut Details



0.94m pipe clearance on back spindle on all Lite Drag Box systems.

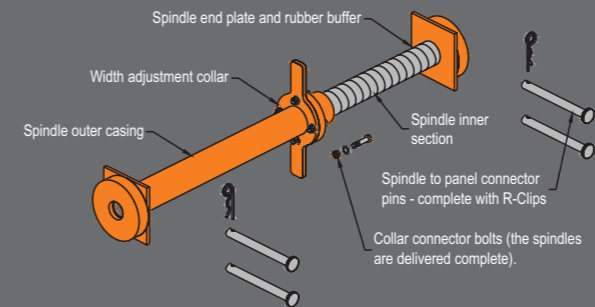
Lite Drag Box Spindle Summary

Spindle type	Internal width bC [m]		External width b [m]		Permissible axial force [kN]	Weight [kg]
	min.	max.	min.	max.		
A	0.53	0.73	0.66	0.86	160	14.2
B	0.71	0.91	0.84	1.04	147	16.9
C	1.05	1.50	1.18	1.63	124	20.9

The trench width increases by 40mm when 4.0m boxes are employed.

Lite spindles are employed at the rear of the base box plus the top extension boxes. The spindle letter matches the corresponding drag box strut.

LITE SPINDLES

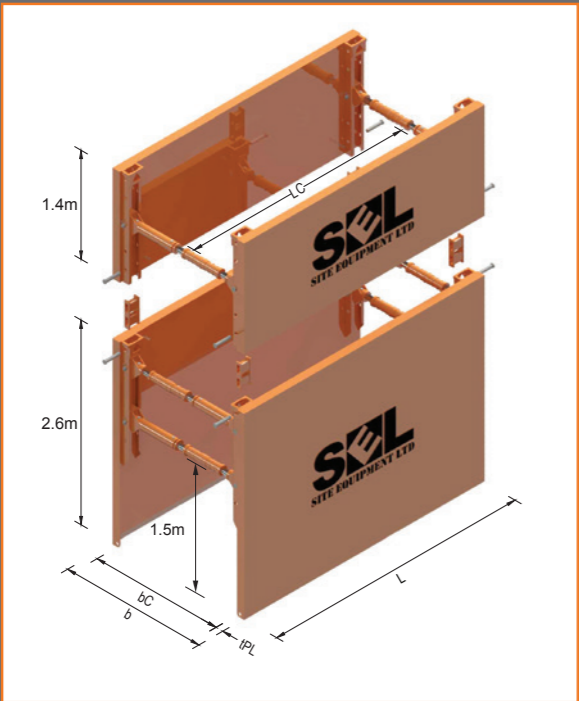


Spindle type	Internal width bC [m]		External width b [m]		Permissible axial force [kN]	Weight [kg]
	min.	max.	min.	max.		
A	0.53	0.73	0.66	0.86	160	14.2
B	0.71	1.07	0.84	1.20	147	16.9
C	1.05	1.65	1.18	1.78	124	20.9
D	1.50	2.10	1.63	2.23	107	23.6
E	1.88	2.48	2.01	2.61	92	25.8
F	2.48	3.08	2.61	3.21	69	29.3

The trench width increases by 40mm when 4.0m boxes are employed.

WE CAN ARRANGE ON SITE DEMONSTRATIONS FOR ALL THESE PRODUCTS IF REQUIRED.

STANDARD TRENCH BOX



Standard Trench Box Summary

Box Length L m	Clearance LC m	Thickness tPL mm	Trench Width [b] v Permissible Earth Pressure [kN/m²]				Box Weight (Trench 1.2-1.48 Wide) kg
			<3.0m	<3.5m	<4.0m	<4.5m	
2.5 B 2.5 T	2.1	107	57.0	51.7	42.7	33.6	1741 1020
3.0 B 3.0 T	2.6		47.5	43.0	35.6	28.0	1996 1165
3.5 B 3.5 T	3.1		40.7	36.9	30.5	24.0	2241 1310
4.0 B 4.0 T	3.6	127	35.6	32.2	26.7	21.0	2481 1455
4.5 B 4.5 T	4.1		33.7	30.5	25.2	19.8	3011 1840

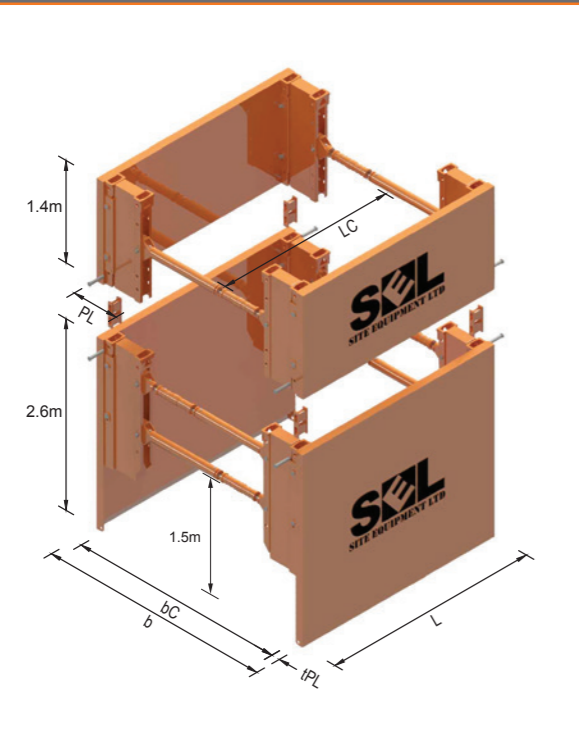
The Standard Trench Box range is designed for deeper trenches and poor ground conditions.

With three adjustable spindle types, the Standard Trench box system can achieve trench widths of 0.85 - 4.48m using a combination of extension pieces.

Recommended maximum depth – 5.30m.

2.0 and 2.5m Mini Trench boxes are also available, please contact us for further information

STANDARD MANHOLE BOX



Standard Manhole Box Summary

Box Length L m	Clearance LC m	Thickness tPL mm	Trench Width [b] v Permissible Earth Pressure [kN/m²]				Square Box Weight kg
			<3.0m	<3.5m	<4.0m	<4.5m	
2.5 B 2.5 T	2.1	107	57.0	51.7	42.7	33.6	2520 1612
3.0 B 3.0 T	2.6		47.5	43.0	35.6	28.0	2854 1797
3.5 B 3.5 T	3.1		40.7	36.9	30.5	24.0	3178 1981
4.0 B 4.0 T	3.6	127	35.6	32.2	26.7	21.0	3498 2166
4.5 B 4.5 T	4.1		33.7	30.5	25.2	19.8	4107 2590

The Standard Manhole Box range is suitable for the installation of deeper manholes, small pumping stations and much more.

With three adjustable spindle types, the Standard Manhole box system can achieve widths of 1.73 - 5.36m using a combination of extension pieces.

Recommended maximum depth – 5.30m.

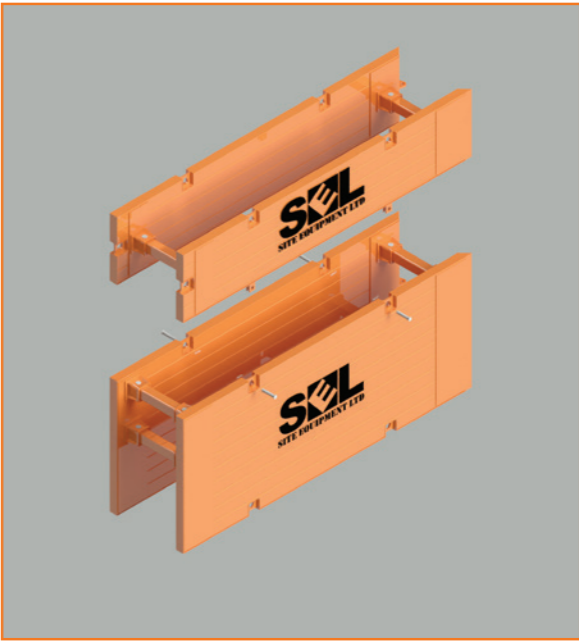
For box widths (bC & b) please see Page 12

FOR THE WEIGHTS OF OTHER SIZES, PLEASE CONTACT US.

SUPER DRAG BOXES

Box	Clear Working Space	Weight (kg)	Permissible Earth Pressure (kN/m²)
5.0 x 2.0m B	4.10m	3984	27.5
5.0 x 1.0m T	4.10m	2025	27.5
6.0 x 2.0m B	5.10m	4540	23.0
6.0m x 1.0m T	5.10m	2380	23.0

Telescopic Spindles	Working Width (mm)	Weight per Strut (kg)	Hogs Back
A	1000 - 1200	94	1.05-2.0m clearance
B	1200 - 1600	120	1.05-2.0m clearance
C	1700 - 2500	171	1.05-2.0m clearance



CONTACT US FOR OTHER SIZES & CLEARANCES

HI-CLEARANCE BOX

Box Length L m	Panel Height H m	Bottom Strut Setting	Pipe Clearance Beneath Struts, hC m	Trench Width [b] v Permissible Earth Pressure [kN/m²]					Box Weight (Trench 1.2-1.48m Wide) Kg
				<2.5m	<3.0m	<3.5m	<4.0m	<4.5m	
4.0	3.15 Base 1.40 Top	High	2.29	20.0	18.5	15.5	Contact SEL for advice		3516 (Base) 1455 (Top)
		Medium	1.99	35.0	29.5	25.0	20.5	16.5	
		Low	1.69	35.0	35.0	35.0	28.5	22.5	

HI CLEAR

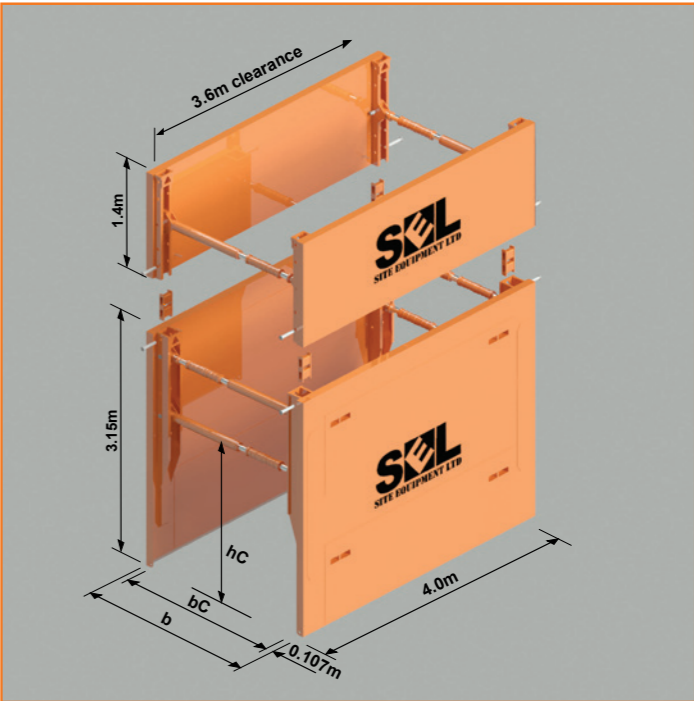
Designed to allow for installation of large diameter pipes and culverts, the Hi Clear box offers reliable trench support and large clearances below the lowest spindles.

With three adjustable spindle types, the Hi Clear box system can achieve widths of 0.85 - 4.48m using a combination of extension pieces.

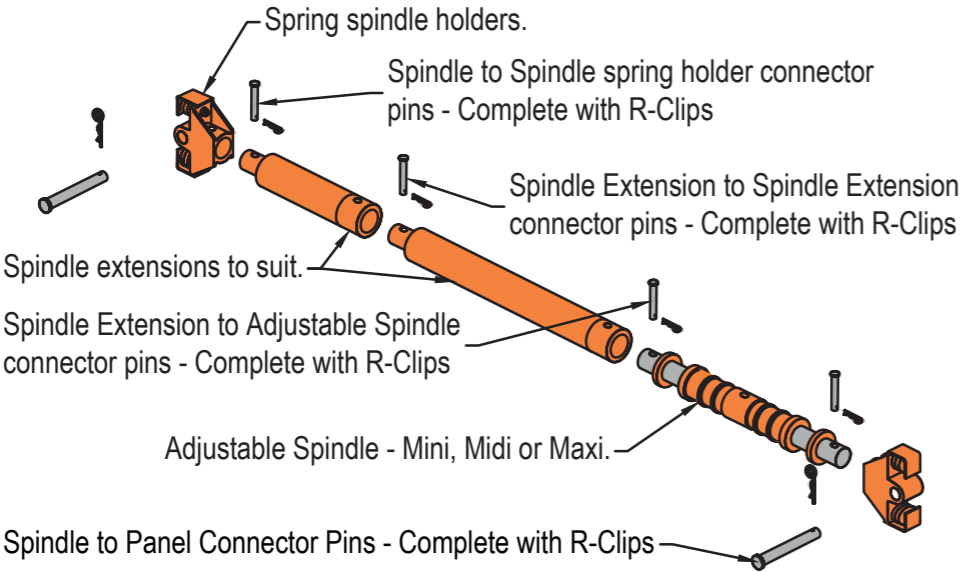
For other plate lengths, transformation plates are available to provide higher strut clearance.

Contact us for more information.

FOR MORE INFORMATION ABOUT OUR PRODUCTS PLEASE VISIT US AT SITEEQUIPMENT.CO.UK



STANDARD SPINDLES



SPINDLE TYPES - EXAMPLES

- Mini-0.0: Mini Spindle with no extension
- Mini-0.5: Mini Spindle with 0.5m extension
- Mini-1.5: Mini Spindle with 1.0m + 0.5m extension

Box Spindle Type	Trench Box / Hi-Clear Box		Manhole Box		Mini Box	
	Internal Width	External Width	Internal Width	External Width	Internal Width	External Width
	bC	b	bC	b	bC	b
	(m)	(m)	(m)	(m)	(m)	(m)
Mini-0.0	0.65 - 0.75	0.85 - 0.95	1.53 - 1.63	1.73 - 1.83	0.65 - 0.75	0.77 - 0.87
Mini-0.5	1.15 - 1.25	1.35 - 1.45	2.03 - 2.13	2.23 - 2.33	1.15 - 1.25	1.27 - 1.37
Mini-1.0	1.65 - 1.75	1.85 - 1.95	2.53 - 2.63	2.73 - 2.83	1.65 - 1.75	1.77 - 1.87
Mini-1.5	2.15 - 2.25	2.35 - 2.45	3.03 - 3.13	3.23 - 3.33	2.15 - 2.25	2.27 - 2.37
Mini-2.0	2.65 - 2.75	2.85 - 2.95	3.53 - 3.63	3.73 - 3.83	2.65 - 2.75	2.77 - 2.87
Mini-2.5	3.15 - 3.25	3.35 - 3.45	4.03 - 4.13	4.23 - 4.33	3.15 - 3.25	3.27 - 3.37
Mini-3.0	3.65 - 3.75	3.85 - 3.95	4.53 - 4.63	4.73 - 4.83	3.65 - 3.75	3.77 - 3.87
Midi-0.0	0.83 - 1.02	1.03 - 1.22	1.71 - 1.90	1.91 - 2.10	0.83 - 1.02	0.95 - 1.14
Midi-0.5	1.33 - 1.52	1.53 - 1.72	2.21 - 2.40	2.41 - 2.60	1.33 - 1.52	1.45 - 1.64
Midi-1.0	1.83 - 2.02	2.03 - 2.22	2.71 - 2.90	2.91 - 3.10	1.83 - 2.02	1.95 - 2.14
Midi-1.5	2.33 - 2.52	2.53 - 2.72	3.21 - 3.40	3.41 - 3.60	2.33 - 2.52	2.45 - 2.64
Midi-2.0	2.83 - 3.02	3.03 - 3.22	3.71 - 3.90	3.91 - 4.10	2.83 - 3.02	2.95 - 3.14
Midi-2.5	3.33 - 3.52	3.53 - 3.72	4.21 - 4.40	4.41 - 4.60	3.33 - 3.52	3.45 - 3.64
Midi-3.0	3.83 - 4.02	4.03 - 4.22	4.71 - 4.90	4.91 - 5.10	3.83 - 4.02	3.95 - 4.14
Maxi-0.0	0.98 - 1.26	1.20 - 1.48	1.86 - 2.14	2.08 - 2.36	0.98 - 1.26	1.10 - 1.38
Maxi-0.5	1.48 - 1.76	1.70 - 1.98	2.36 - 2.64	2.58 - 2.86	1.48 - 1.76	1.60 - 1.88
Maxi-1.0	1.98 - 2.26	2.20 - 2.48	2.86 - 3.14	3.08 - 3.36	1.98 - 2.26	2.10 - 2.38
Maxi-1.5	2.48 - 2.76	2.70 - 2.98	3.36 - 3.64	3.58 - 3.86	2.48 - 2.76	2.60 - 2.88
Maxi-2.0	2.98 - 3.26	3.20 - 3.48	3.86 - 4.14	4.08 - 4.36	2.98 - 3.26	3.10 - 3.38
Maxi-2.5	3.48 - 3.76	3.70 - 3.98	4.36 - 4.64	4.58 - 4.86	3.48 - 3.76	3.60 - 3.88
Maxi-3.0	3.98 - 4.26	4.20 - 4.48	4.86 - 5.14	5.08 - 5.36	3.98 - 4.26	4.10 - 4.38
For 4.50m long Trench boxes, add 40mm to the 'External Width' column.						

EDGE PROTECTION & ACCESS SYSTEMS

Our Edge Protection & Access Systems fit our complete product range from boxes to sheets and frames solutions. This access system is light and easy to use and allows a safe entry system in and out of an excavation.

Just spin the locking section on to the box plate or sheet pile and lift on the barriers. Include the gated platform to gain ladder access and a Davit System to further improve safety on entry if required.

Barriers available in lengths from 2.0m to 4.5m.



DAVIT SYSTEM

Davit Systems for all trench box systems and bracing.

FOR MORE INFORMATION ABOUT OUR PRODUCTS PLEASE VISIT US AT SITEEQUIPMENT.CO.UK



ULTRA LITE UTILITY BOX

NEW FLEET ADDITION

The Ultra Lite Utility Boxes can be used either horizontal or vertically increasing trench length or height depending on the requirement. Each box is supplied with fully adjustable spindles to enable a fine adjustment on trench widths.

We can also supply corner adaptors to fully enclose your excavation.

Spindle Type	Spindle Weight	Weight of Individual Plate	Assembled Box Weight	Internal Width	External Width
	kg	kg	kg	Min – max (m)	Min – max (m)
A	5.6	136	295	0.43 – 0.64	0.65 – 0.86
B	7.2	136	300	0.63 – 1.04	0.85 – 1.26
C	11.5	136	320	1.12 – 2.01	1.34 – 2.23

When employed as an enclosed four-sided system the assembled box weighs 600kg

Box Length	Box Height	Maximum Panel Depth	Clearance Beneath Spindles	Clearance Between Spindles	Permissible Earth Pressure
m	m	mm	m	m	kN/m ²
2.00	1.50	110	0.80	1.85	26.0
1.50	2.00	110	0.80	1.35	26.0

The panels can be configured in either a landscape or portrait orientation



DOKA FORMWORK SYSTEMS

DOKA FRAMI XLIFE SYSTEM

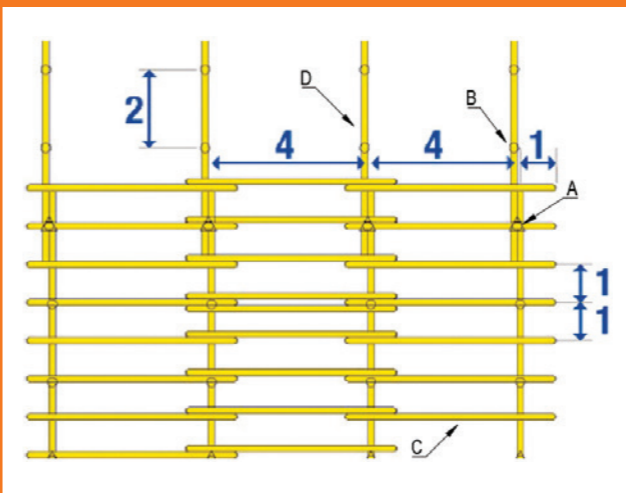
With a panel weight starting at just 19.5kg, the Frami Formwork system doesn't require a crane to be erected. This makes it perfect for easily forming foundations, bases, columns and walls. The system has a robust galvanised frame and a safe working load of 50kN/m².

Frami Formwork panels are versatile and flexible, so you can quickly form many layouts with ease. The panels can be fixed at any point on the frame, all quickly and safely using Frami Clamps.

Panels are 1200, 1500 and 3000mm high, with a range of widths to form any length of shutter required.



DOKAFLEX 124 SOFFIT SUPPORT SYSTEM



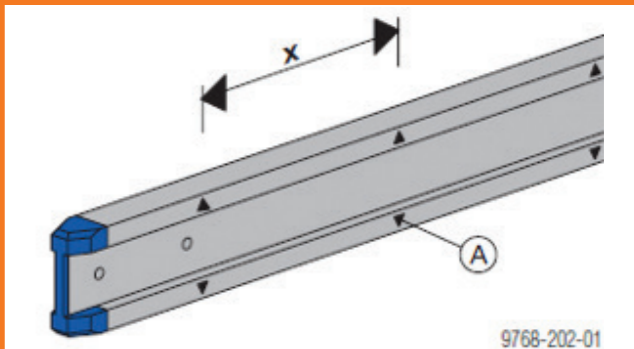
- A: Floor Prop with lowering head
- B: Floor prop with supporting head
- C: Secondary beams
- D: Primary beams

**PLEASE SEE
PAGE 22 FOR
FURTHER DETAILS**

Our new DokaFlex 124 soffit support system offers an extremely simple falsework system for slabs up to 30cm thick. Using the easily visible marks on the timber formwork beams the system can be set out in minutes, requiring no measuring or further design.

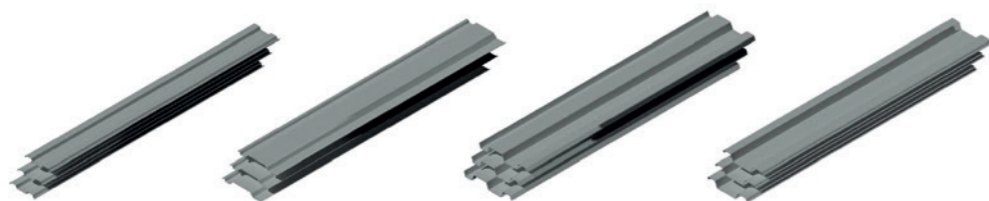
With several simple components it is easy to tell from a quick visual check if the system has been correctly erected.

For more complicated layouts or slabs with supporting columns or shear walls, please contact us for a detailed design



X = 0.50m
A = Identification mark

TRENCH SHEETS & ACCESSORIES

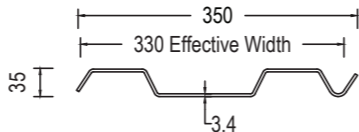


**LARGER
SECTION SIZES
AVAILABLE
ON REQUEST**

Type	Width	Effective Width	Depth	Thickness	Weight per metre	Weight per square metre	Permissible Bending Moment
	mm	mm	mm	mm	kg/m	kg/m ²	kNm/m
Standard	350	330	35	3.4	10.8	32.9	8.5
KD6	620	600	80	8.0	50.0	83.2	43.5
BD500	515	495	50	6.0	27.7	54.6	36.4
SEI	535	508	75	6.0	33.5	67.0	36.0

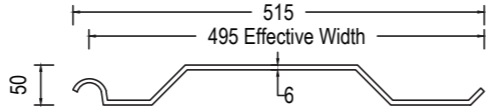
Standard Lapped Sheets

For everyday applications our standard sheets come in lengths ranging from 1.50m to 5.00m.



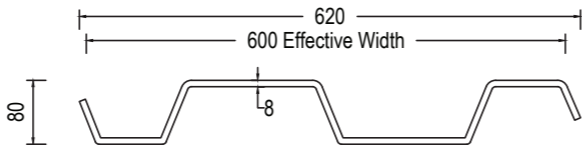
BD500 Lapped Sheets

Our mid range lapped sheets are able to do the heavier jobs yet still light enough to do smaller excavations.



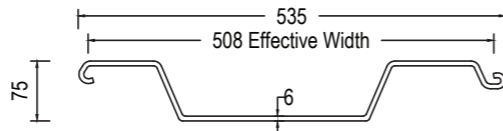
KD6 Lapped Sheets

Our heavy duty 8mm sheet pile is used in most temporary works applications and when ground conditions are difficult.



SEI Interlocking Sheets

SEI Interlocking sheets are ideal for excavations where groundwater is a problem. Corner piles also available.



TRENCH SHEET ACCESSORIES

SHEET EXTRACTOR

Designed for extracting overlap sheet piles from the ground. Supplied complete with safety R Clip.



DRIVE CAP

Gives you the ability to push the sheet without damaging the ends.



QUICK RELEASE SHACKLE

The purpose of the QRS is to safely carry Trench Sheets to an excavation.



MANHOLE BRACE SYSTEMS

SINGLE ACTING BRACE SYSTEM

Light and simple to use, for excavations 1.8 – 2.7m
Ideal for jobs where a small machine is being used, the excavation can be up to 3 metres deep in good ground.

Type	Sheet to sheet	Frame Weight	Permissible Load
	m	Kg	kN/m
AA	1.8 (min)	400	38
	2.7 (max)		12.8

**FOR MORE INFORMATION
ABOUT OUR PRODUCTS
PLEASE VISIT US AT
SITEEQUIPMENT.CO.UK**

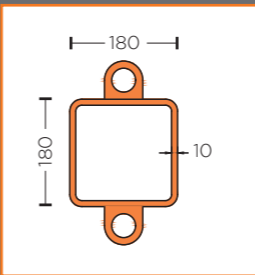
DOUBLE ACTING BRACE SYSTEM

This Brace System has interchangeable legs. For example, Type A legs (2m to 3m) and Type E legs (6m to 7m) form a brace which is 7m x 3m.

Loadings given are at maximum extension.

Type	Sheet to Sheet Range	Leg Weight	Permissible Load (Max. Extension)
	mm	kg	kN/m
A	2000-3000	260	65
B	3000-4000	305	41
C	4000-5000	390	25.5
D	5000-6000	445	19
E	6000-7000	627	18.5

For clear internal distances, please subtract 360mm from the sheet to sheet measurement. Please note this does not allow for deflection



LEG DETAILS

Outer sleeve: 180x180x10 SHS
Inner sleeve: 150x150x12.5 SHS
Ram stroke: 1000mm

The interchangeable Double Acting Manhole Brace system can be used for a range of applications, most commonly manholes and small tank installations.

MANUAL AND POWERED HYDRAULIC PUMPS

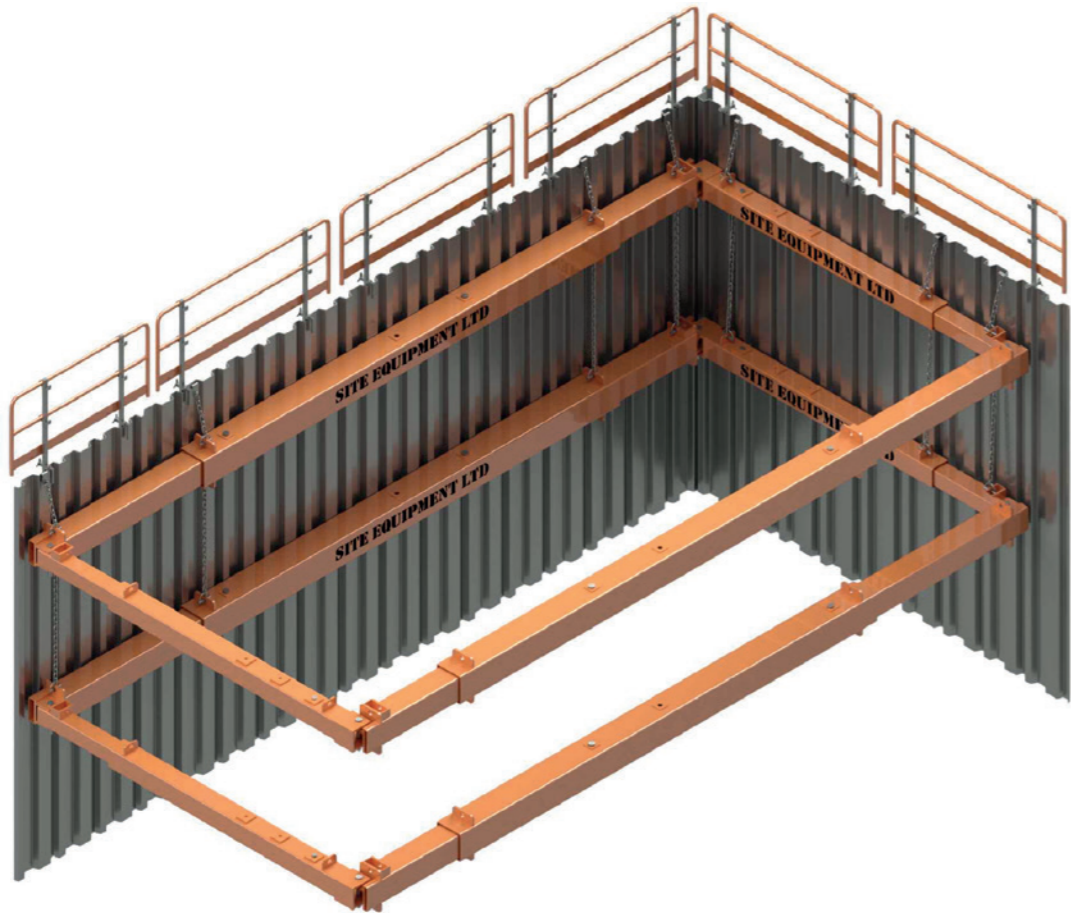
Manual pump – 12cc Pump Maximum Pressure 380 BAR with a 10-litre steel reservoir – ideal for Waler rams/ single acting and also double acting legs.

Petrol pump – Honda GX390 Engine – 15L/Min output. 3600 Psi – 54 litre poly tank. Custom cage fabricated with lifting points and forklift pockets. – ideal for H series legs



H SERIES BRACE FRAMES

Our tried and tested H Series bracing system is designed for larger excavations with interchangeable leg sizes. Ideal for large tank excavations at depth.



Type	Sheet to Sheet Range	Section Size	Leg Weight	Min Extension	Max Extension
	mm	mm	kg	kN/m	kN/m
H40	3030 - 3830	250	490	108	76
H40X	3000 - 4500	250	550	160	70
H47	3680 - 4480	250	529	86	54
H60	4000 - 6000	250	800	95	41
H75	5500 - 7500	300	1270	70	37
H80	5000 - 8000	300	1276	93	35
H90	7000 - 9000	350	1550	60	35
H90X	7000 - 11000	350	2000	64	25



H40, H47 & H60
Outer Box Section:
250x250 mm



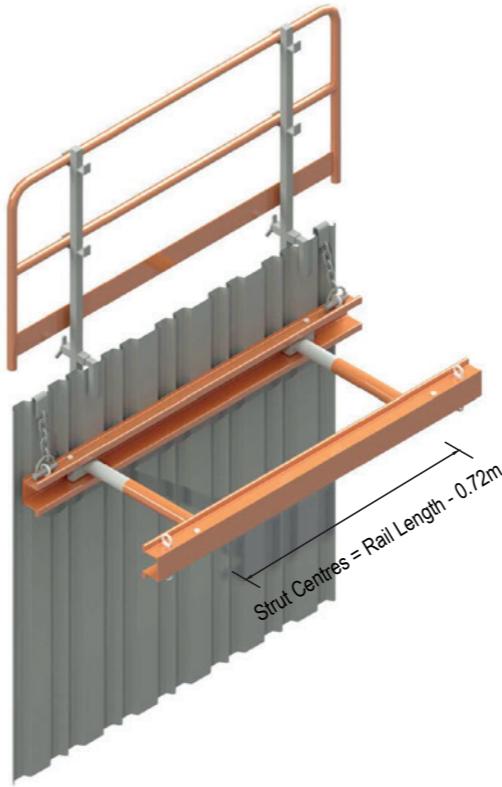
H75 & H80
Outer Box Section:
300x300 mm



H90 & H90X
Outer Box Section:
350x350 mm

WALER FRAME SYSTEMS

WALER FRAME SYSTEM

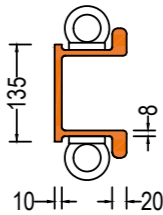


Length	Permissible Load	Cylinder	Min Width	Max Width	Frame Weight
m	kN/m		m	m	kg
1.50	80	2no	0.50	2.00	77
2.00	56	2no	0.50	2.00	88
2.50	48	2no	0.50	2.00	99
3.00	30	2no	0.50	1.80	110
3.50	36	3no	0.50	1.80	143
4.00	30.5	3no	0.50	1.80	154
5.00	23	3no	0.50	1.80	168

Please note that 3 Cylinders are required on rails 3.5m and above.

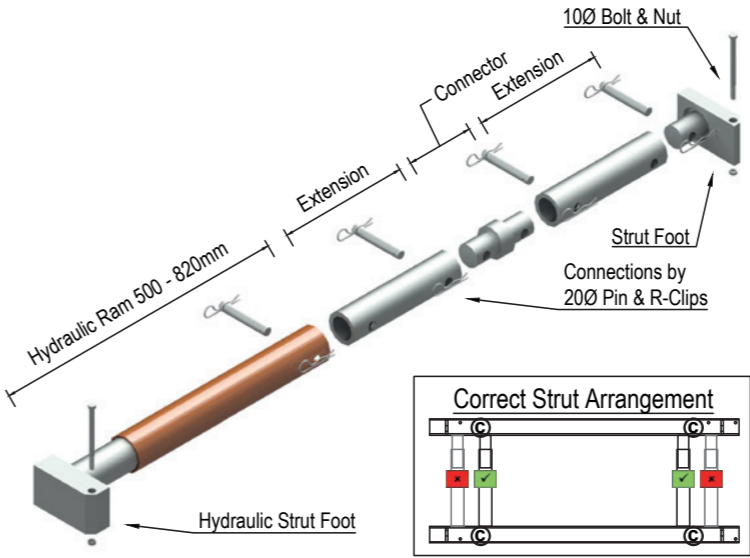
Frame weights assume max length strut @ 22kg each

ALUMINIUM WALER RAIL



Permissible Moment	Moment of Inertia	Section Modulus	Weight
kNm	cm ⁴	cm ³	kg/m
18	561	117	11

WALER STRUT ARRANGEMENT



Item	Weight
	kg
1.5m Rail	16.5
2.0m Rail	22.0
2.5m Rail	27.5
3.0m Rail	33.0
3.5m Rail	38.5
4.0m Rail	44.0
5.0m Rail	55.0
Hydraulic Ram 500-820mm	11.0
Strut Foot	3.1
0.10m Extension	1.0
0.20m Extension	1.8
0.30m Extension	2.5
0.50m Extension	3.1
1.0m Extension	6.2

VERTI SHORE RAIL SYSTEMS

Simple to use and only recommended in good solid ground / stable ground conditions. With a plate size of 150mm wide, this is easy to handle in and out of the trench, allowing a maximum of 2 trench widths.

Available height - 1.5m.

MANHOLE SHUTTERS

MANHOLE SHUTTERS

Supplied in a range of 900mm or 1800mm high in PVC.
The PVC panels are light, flexible and easy to clean whilst maintaining their strength.



**WE RECOMMEND
THE USE OF RATCHET
STRAPS WHEN CASTING
LARGE MANHOLES.**

Internal Diameter of Manhole (mm)	Poly		Surround Volume (m3)
	A (1276mm)	B (1030mm)	
675	2	1	0.90
900	1	3	1.20
1050	3	1	1.31
1200	1	4	1.48
1350	3	2	1.61
1500	5	-	1.70
1800	5	1	2.04
2100	5	2	2.40
2400	5	3	2.69
2700	5	4	3.07
3000	5	5	3.37

MANHOLE RING SAFETY PLATFORM

For working off the Manhole Ring giving a safer and secure way of working.
Used when either powering or poking concrete, the gated platform has a ladder safe point.

Concrete ring sizes 1200mm, 1350mm and 1500mm rings.



TRENCH STRUTS & PROPS

TRENCH STRUTS

For use in trenching applications where timber walers are employed. The Struts have crimped ends providing grip.

Size	Height Closed	Height Open	Weight	Permissible Load
	<i>m</i>	<i>m</i>	<i>kg</i>	<i>kN</i>
Strut Size 0	0.305	0.475	5	30
Strut Size 1	0.475	0.686	6.6	30
Strut Size 2	0.686	1.092	8.7	30
Strut Size 3	1.016	1.676	11.8	30



ADJUSTABLE PROPS

Used throughout the construction industry, this floor to soffit support system with fixing holes will keep the prop in the position required. Supplementary scaffold tube and fittings are also available.

Size	Height Closed	Height Open	Weight	Permissible Load – Concentric loading & Max. 1.5° out of plumb.
	<i>m</i>	<i>m</i>	<i>kg</i>	<i>kN</i>
Type 0	1.07	1.82	13	35
Type 1	1.75	3.12	18.6	18
Type 2	1.98	3.35	19.6	16
Type 3	2.59	3.96	22.3	12
Type 4	3.20	4.87	26.4	10



PUSH / PULL PROPS

Industry standard push/pull props with end plate adaptors which offer the flexibility to connect to existing structures, SEL Slimshore Soldiers and our Frami Formwork System.

Prop No.	Height Closed	Height Open	Weight	Permissible Load – Concentric loading & Max. 1.5° out of plumb.
	<i>m</i>	<i>m</i>	<i>kg</i>	<i>kN</i>
Type 0	1.07	1.82	15.8	35
Type 1	1.75	3.12	23.0	18
Type 2	1.98	3.35	24.0	16
Type 3	2.59	3.96	27.0	12
Type 4	3.20	4.87	31.6	10



FRAMI XLIFE FORMWORK SYSTEM

The versatile FRAMI formwork system is simple and lightweight with 1200, 1500 and 3000 panels available.

Contact us now for advice, technical support, and design back up.

Item	Property	Additional Information
Permissible Pressure	50kN/m²	High capacity panels suitable for high level pours using a controlled pour rate.
Panel width	90mm	Front face to rear of panel.
Minimum Panel Weight	19.5kg	1200 x 300mm Easily man-handleable.
Maximum Panel Weight	86.5kg	3000 x 900mm – Requires small excavator & Lifting Hooks.
Form-face Type	X-Life	Plastic enhanced, durable face giving an F2 Finish.
Standard Panel Widths	0.30 0.45 0.60 0.75 0.90m	
Standard Panel Heights	1.20 1.50 3.00m	
Inside Corner	0.20 x 0.20m	

DOKAFLEX 124 SOFFIT SUPPORT SYSTEM

Simple formwork system requiring no design input on straightforward layouts confined within supporting concrete walls. For slabs up to 30cm thick simply follow the spacings of:

- 1 Mark: Secondary beam spacings
- 2 Marks: Prop spacings along the primary beams
- 4 Marks: Prop spacings between primary beams



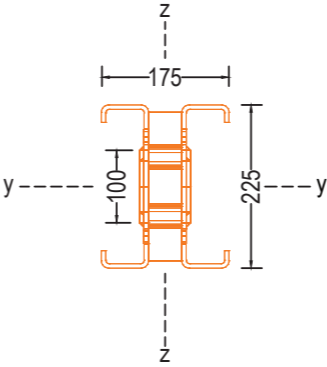
Item	Property	Additional Information
Eurex Floor Props	30kN Capacity	Available sizes: 2.50m, 3.0m & 3.50m
Doka Folding Tripod TOP	11.95 kg / 80cm Height	For securing floor props
H20 Timber formwork beams	200mm Depth 80mm Width 5.3kg/m	Available sizes: 2.65m, 2.90m, 3.90m & 5.90m
Lowering Head	Allows for quick striking of the system by hammer blow lowering mechanism. Supports single or twinned beams.	
4-Way U-Head	Supports single or twinned beams depending on orientation	
Supporting Head	For intermediate supports of primary beams	

SLIMSHORE SOLDIER SYSTEM

Our versatile Slimshore Soldier system has a high strength to weight ratio, which with a large range of soldier sizes and accessories allow it to be used as:

- Strongbacks for traditional formwork applications.
- In Propping & Needling applications.
- In Shoring / Façade retention applications.
- To compliment our Frami Formwork system in single sided applications.

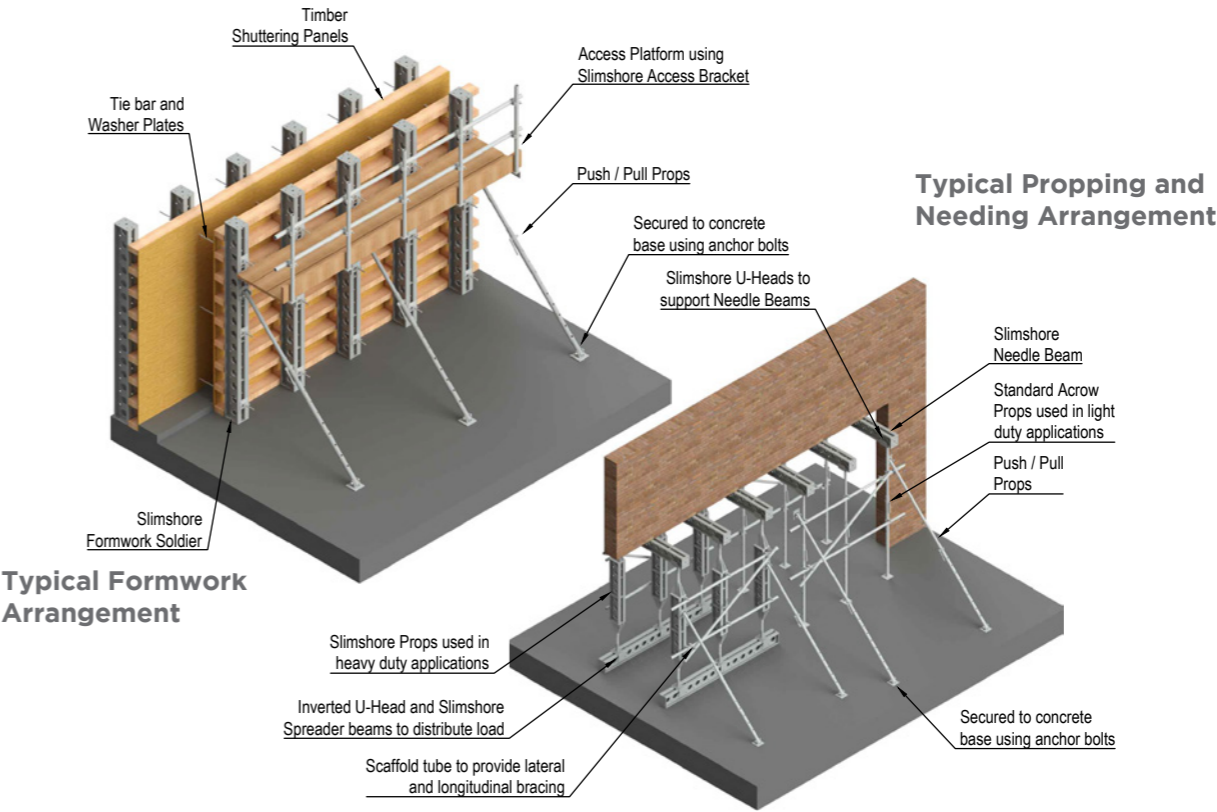
Please contact us for further advice and support.



Slimshore Soldier	
Description	Weight (kg)
0.09m Packer Unit	7.3
0.36m Soldier	11.9
0.54m Soldier	15.2
0.72m Soldier	18.7
0.90m Soldier	22.0
1.8m Soldier	38.8
2.7m Soldier	55.4
3.6m Soldier	72.2
Slimshore Soldier units can be connected end to end using a 4no. or 6no. M16x40 Bolted joint, depending on the required strength. The soldiers can be used as Prop units, Raking shores, Needle Beams and more.	

Key Permissible Properties	
Moment Capacity	42.5 kNm
Shear Capacity	216.5 kN
Axial Capacity (@ 4m)	232 kN
4no Bolted Joint - Moment	15.5 kNm
4no Bolted Joint - Tension	167 kN
6no Bolted Joint - Moment	20.5 kNm
6no Bolted Joint - Tension	275 kN

TYPICAL APPLICATIONS



FORMWORK ACCESSORIES

Dividag Pressed Washer Plate and Wing Nut

Specification:

Pressed Washer Plate.

- Dimensions: 120x120x10mm.
- Pressed Pattern.
- 80 kN SWL

Superplate

- Diameter 120mm
- 95kN SWL



Column Clamps (per set of 4) including wedges

- No 1 200mm to 600mm.
- No 2 300mm to 900mm.
- No 3 400mm to 1200mm.
- No 4 590mm to 1410mm.
- Column clamps are generally used for the construction of square or rectangular columns.



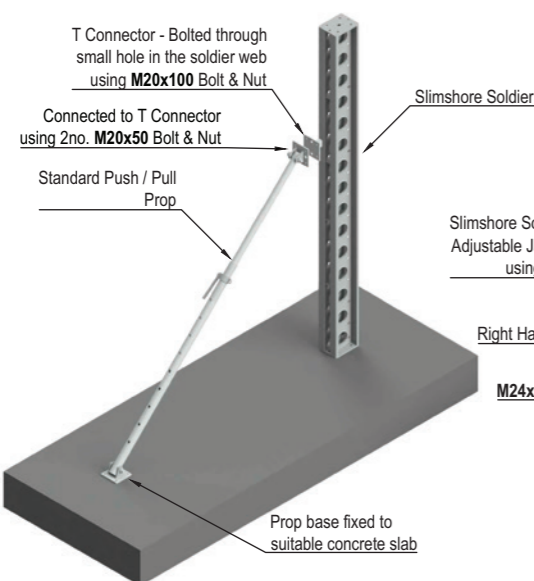
Dividag Tie Bar

6mtr long, 15mm diameter, 9kg per bar.

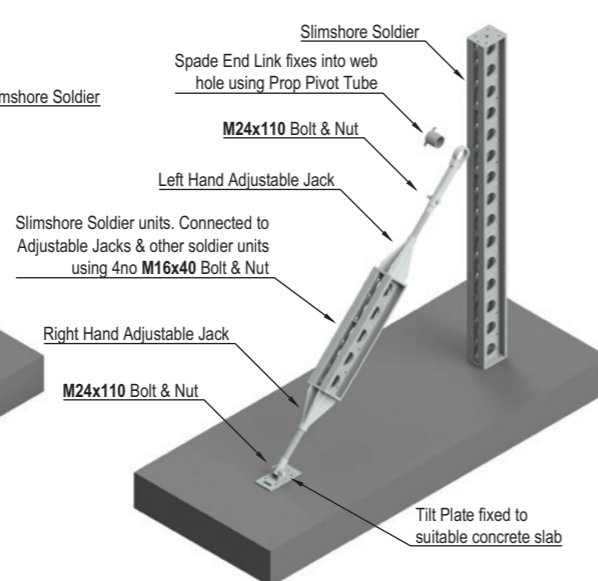
CONSUMABLES SUCH AS PLASTIC CONES AND TUBE, MOULD OIL AND CHAMFER FORM AVAILABLE TO PURCHASE

SLIMSHORE PUSH/PULL PROP TYPES

Light Duty Push/Pull Standard Props



Heavy Duty Push/Pull Slimshore Units



For general light usage of push/pull props and standard props, please see Page 21.

For heavy duty usage using Slimshore Soldier units, most typical applications will be limited by the **65kN Spade End Link** capacity. For further information and technical advice please contact us.

SEL LITE FORMWORK SOLDIERS

A complete range of sizes, the Lite system is strong as it is often utilised for propping as well as for formwork uses.

Type	Weight
0.9m	12kg
1.2m	16kg
1.8m	21kg
2.4m	26kg
2.7m	30kg
3.6m	37kg

CONCRETE SKIPS

ROLLOVER / COLUMN SKIP

Manufactured with a 2m rubber chute for use in cavities or formwork areas. Operated from an endless chain or rope at the side of the skip, with the rubber chute in the formwork panel.

The operator controls the flow and the direction of the pour, greatly reducing any spillages. Sizes of 250 - 3000 litres and 150 - 2000 litres.



CONEFLOW

The most common of skips ideal for big pours or areas where space is not an issue. Operated by a wheel on the side of the skip so at all times the machine operator has a good view of the workforce. A full range of sizes from 150ltr to 2000ltr.



GROUND PROTECTION

TURF MATS

The Turf Mat is a popular and robust product, weighting just 39kg.

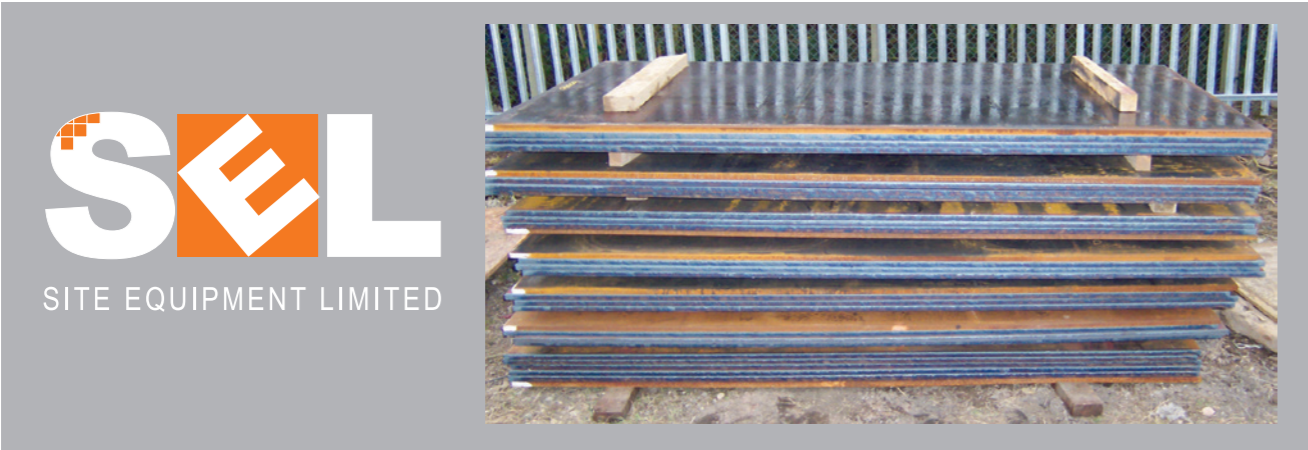
This 2.4 x 1.2 PVC matting is flexible and hard-wearing, taking vehicles up to 60T across a good stable ground.

The Turf Mat comes with 25mm holes along the sides, front and back, so can be joined together on each side. This helps achieve a large area. Anchor pins can also be supplied if larger vehicles will traffic the system.



STEEL & ANTI-SKID ROADPLATES

We stock a comprehensive range of Anti-Skid and Steel Roadplates.



Size	Type	Weight	Thickness
1.2m x 1.2m	Steel	200kg	12mm
1.2m x 1.2m	Anti-Skid	211kg	12mm
1.8m x 1.2m	Steel	370kg	20mm
2.4m x 1.2m	Steel	490kg	20mm
2.4m x 1.2m	Anti-Skid	502kg	22mm
3.0m x 1.5m	Steel	1056kg	25mm
3.5m x 2.0m	Steel	1150kg	25mm
4.0m x 2.0m	Anti-Skid	1480kg	25mm
4.0m x 2.0m	Steel	1400kg	25mm

ANTI-SKID ROADPLATE DETAIL AND ACCESSORIES

Holding Down Bolts are available for fixing to the surface, to ensure there is no movement when vehicles are crossing or turning on the plate.

The bolts are simply drilled into the road surface and come in three parts: holding down bolt, steel collar and plastic cap (to protect bolt).

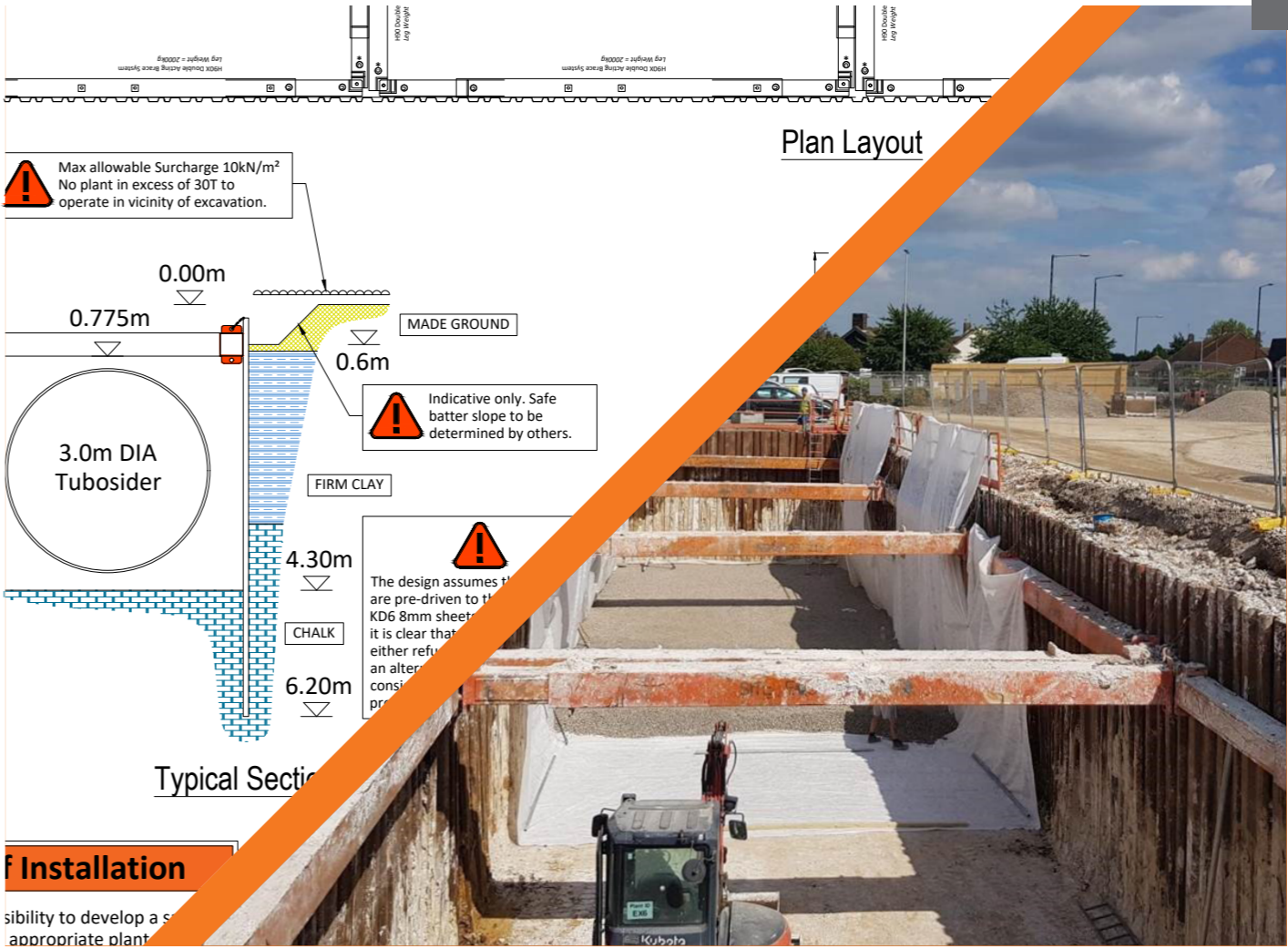


TEMPORARY WORKS DESIGN

SITE EQUIPMENT ARE A LEADING INDEPENDENT SUPPLIER OF TEMPORARY WORKS DESIGN AND ENGINEERING SOLUTIONS IN THE UK. WE CAN PROVIDE FULL DESIGN PACKAGES FOR:

- Excavation support systems ranging from light, easily manageable trench box systems to Hydraulic Bracing systems for deep excavations and cofferdams.
- Formwork support elements to provide both Frami Panel & Traditional Formwork solutions.
- DokaFlex Soffit support system over and above the standard 124 layout.
- Propping & Needling structural building support – our flexible shoring support system is ideal for a wide range of building refurbishment projects.

The hire and sale of our wide range of products are backed up by a complimentary Temporary Works Design Service **undertaken by our team of professional, experienced and qualified Civil and Structural Engineers.** We endeavour to ensure that your requirements are met on a diverse range of construction projects. Economic, clearly illustrated designs in line with **relevant codes and industry guidance** are produced with safe buildability being at the forefront of the process.



REGIONAL AREAS

BRISTOL & SOUTH WEST (HQ)

BS11 9HS
0117 982 8236

LONDON & HOME COUNTIES

UB7 7EG
020 7127 8002

CARDIFF & NORTH WALES

CF37 5TG
01443 844713



SITE EQUIPMENT LIMITED

**NATIONWIDE DELIVERY,
HIRE AND SALES,
TEMPORARY WORKS DESIGN**

**siteequipment.co.uk
enquiries@siteequipment.co.uk**

