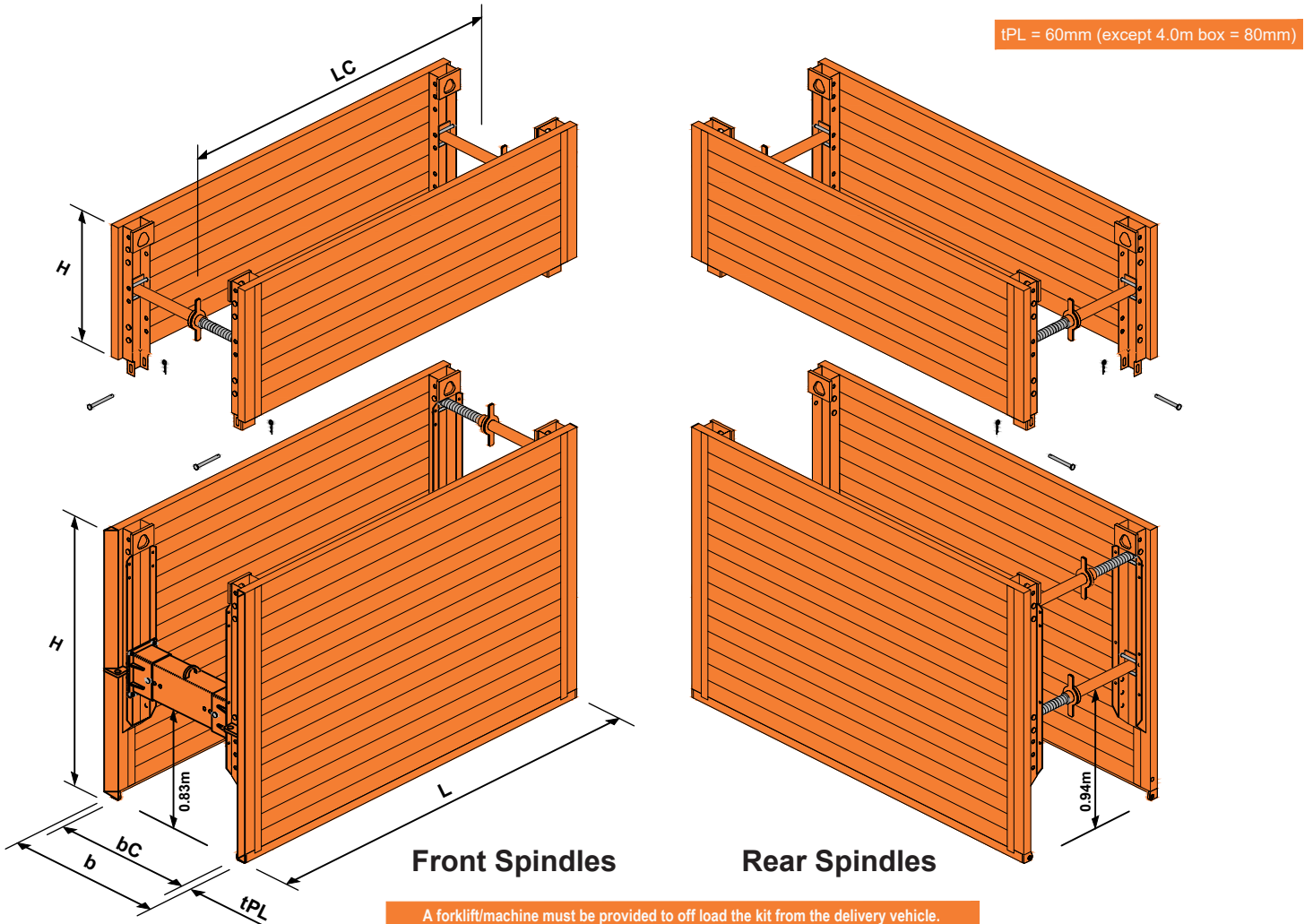


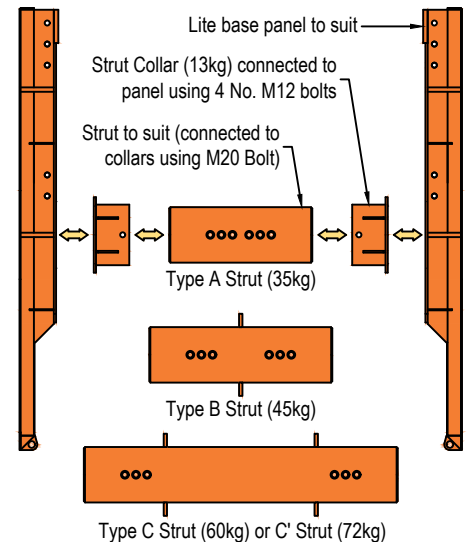
Lite Drag Box Information Sheet



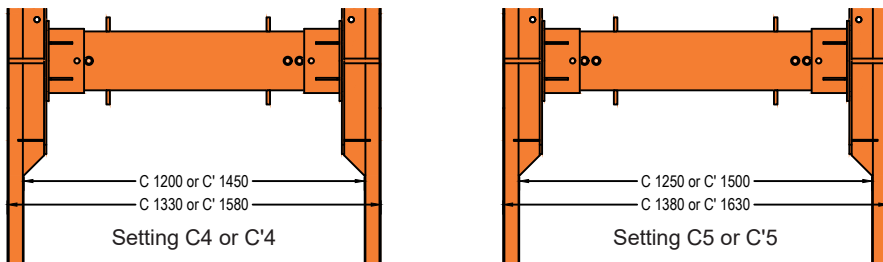
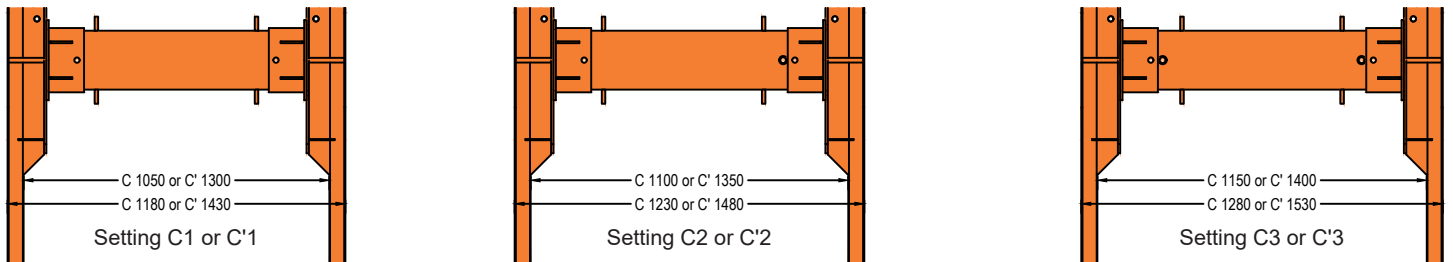
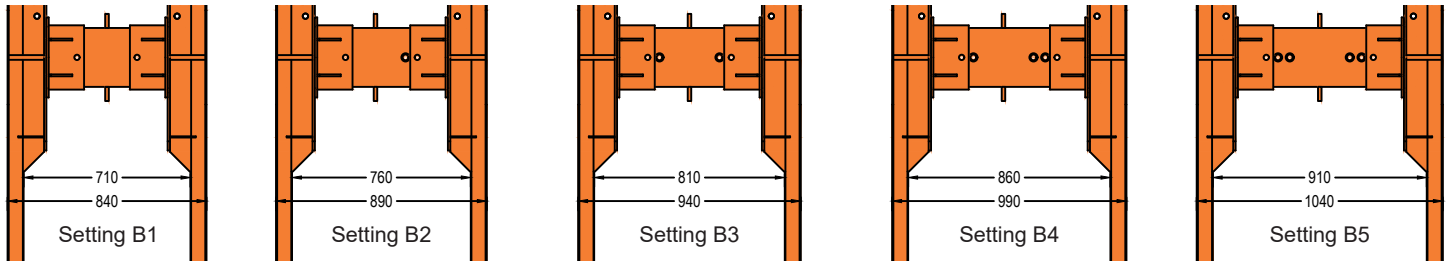
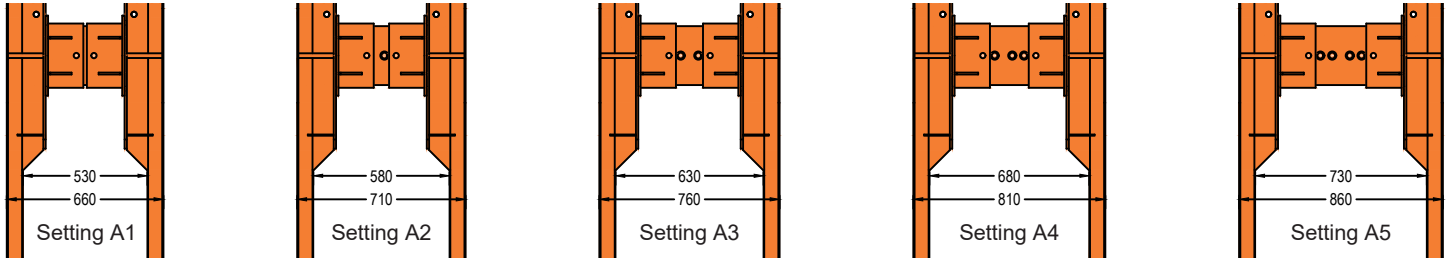
Lite Drag Box Summary

Plate length L [m]	Plate height H [m]	Pipe clearance length LC [m]	Permissible Earth Pressure [kN/m ²]	Weight per box [kg] Please refer to the spindle chart below.		
				Type A	Type B	Type C'
2.00	2.00 base 1.00 top	1.50	34.1	776	792	827
				406	412	420
2.50	2.00 base 1.00 top	2.00	30.0	894	910	945
				462	468	476
3.00	2.00 base 1.00 top	2.50	25.0	1016	1032	1077
				518	524	532
3.50	2.00 base 1.00 top	3.00	18.9	1362	1378	1413
				582	588	596
4.00	2.00 base 1.00 top	3.50	23.0	1610	1626	1661
				844	850	858

Front Strut Details



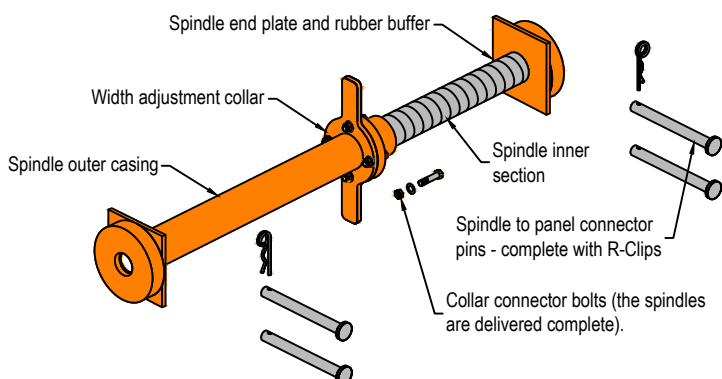
Lite Drag Box Information Sheet



Front Strut Options

The Lite Dragbox has four strut types each with 5 width adjustments for maximum flexibility when undertaking trench excavations. The boxes can be delivered assembled. Simply request the width setting you require when placing your order with Site Equipment. Please note both the internal (bC) and external (b) box widths are shown. It is also possible to alter the box widths on site. If unsure please contact Site Equipment for advice.

Please note that two C front strut options are available giving a range of internal sizes from 1050-1500mm at 50mm increments.



Lite Drag Box Spindle Chart

Spindle type	Internal width bC [m]		External width b [m]		Permissible axial force [kN]	Weight [kg]
	min.	max.	min.	max.		
A	0.53	0.73	0.66	0.86	160	14.2
B	0.71	0.91	0.84	1.04	147	16.9
C	1.05	1.50	1.18	1.63	124	20.9

The trench width increases by 40mm when 4.0m boxes are employed.

Lite spindles are employed at the rear of the base box plus the top extension boxes. The spindle letter matches the corresponding drag box strut.